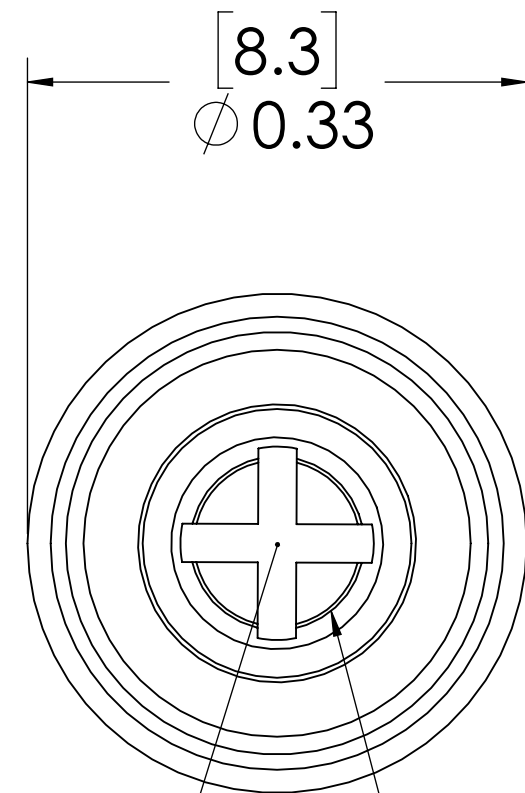
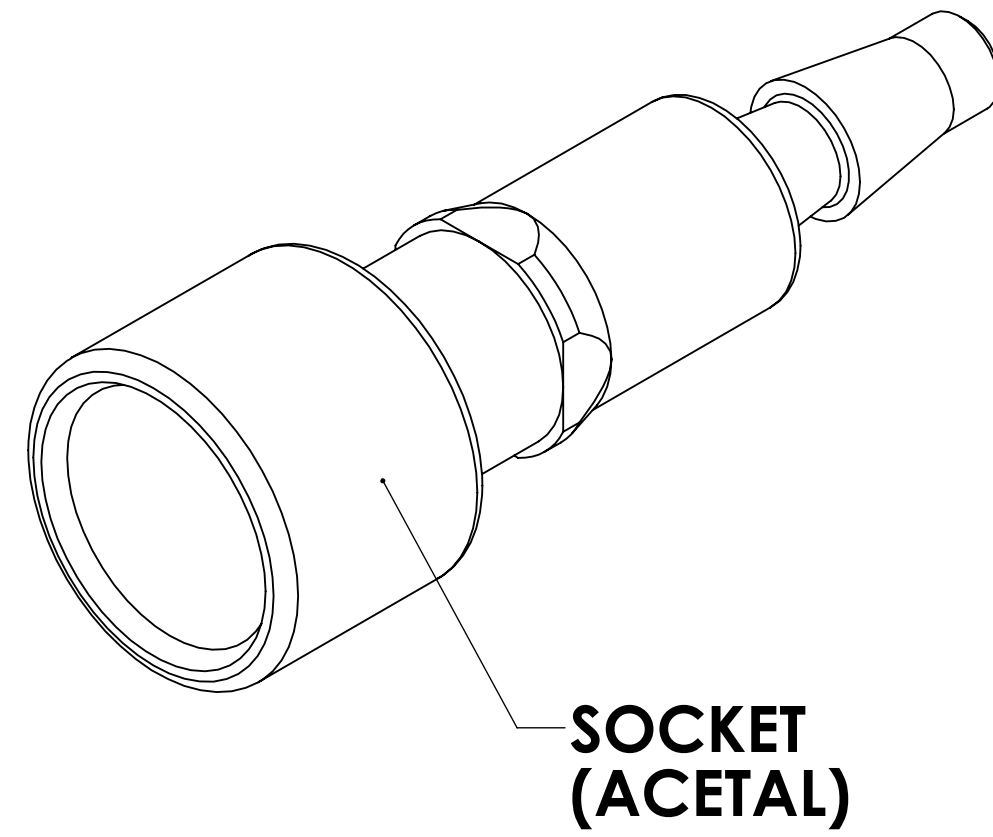
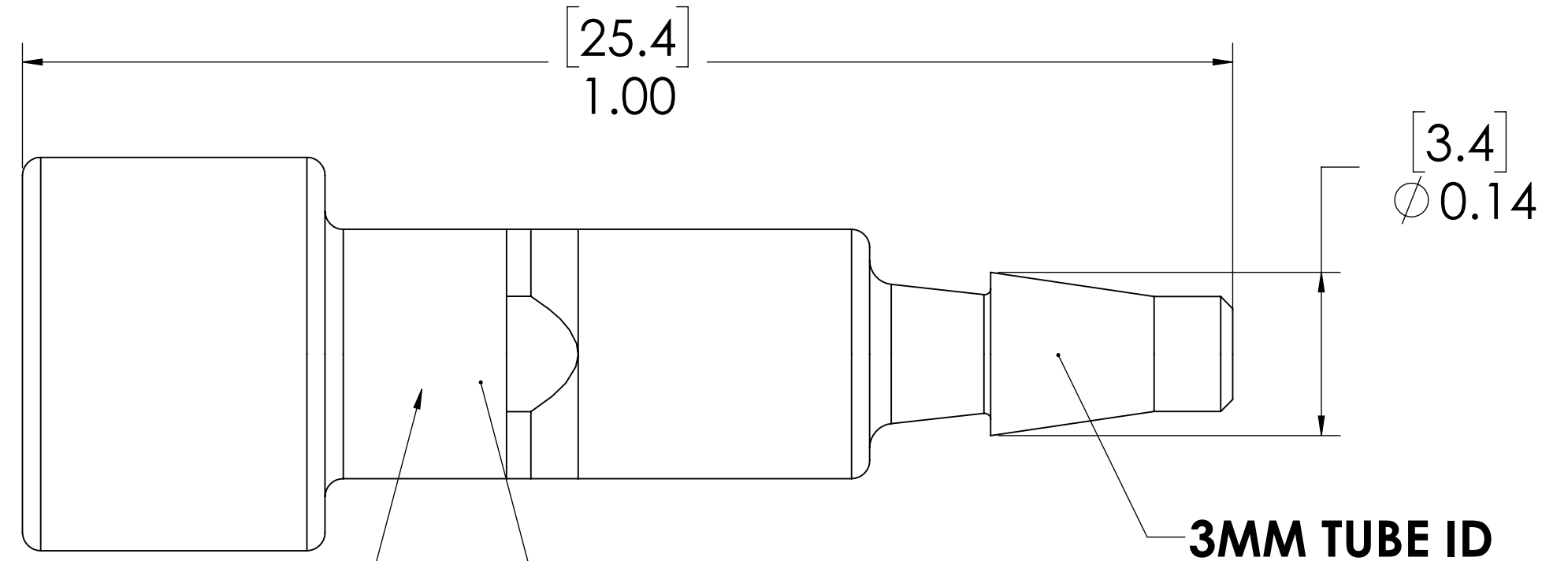


REVISIONS						
SHEET	ZONE	REV.	ECO	DESCRIPTION	DATE	APPROVED
1	ALL	NC	50136	INITIAL RELEASE	1/5/2015	HRC
1	ALL	A	50139	CHANGED P/N FROM 10ACV-SB2-03M TO 10ACV-SB2-M3	1/13/2015	HRC
1	ALL	B	50253	UPDATE DWG TO CURRENT FORMAT & STANDARDS	10/30/2018	HRC




**VALVE CAP
INTERNAL
(STAINLESS STEEL)**



NOTES:

- MATERIAL: ACETAL
- COLOR: NATURAL WHITE
- O-RING MATERIAL: BUNA-N
- O-RINGS LUBRICATED WITH FOOD GRADE SILICONE OIL, 350 CST.

FOR REFERENCE ONLY

<small>UNLESS OTHERWISE SPECIFIED: DIMENSIONS ARE IN INCHES TOLERANCES: FRACTIONAL ± 1/32 ANGULAR: MACH ± 0.5 BEND ± 2 ONE PLACE DECIMAL ± 0.1 TWO PLACE DECIMAL ± 0.01 THREE PLACE DECIMAL ± 0.005 TWO PLACE DUAL (mm) [±0.12]</small>	DRAWN	LMP	5/4/2018	 LinkTech 10AC Series Inline Coupling, Valved, 3M HB, No Sleeve
	CHECKED	HRC	5/4/2018	
	ENG APPR.	HRC	10/30/18	
	MFG APPR.	BDB	10/30/18	
PRODUCTION	LS	10/30/18		<small>PROPRIETARY AND CONFIDENTIAL</small> <small>THE INFORMATION CONTAINED IN THIS DRAWING IS THE SOLE PROPERTY OF LINKTECH LLC. ANY REPRODUCTION OR DISCLOSURE IN PART OR AS A WHOLE WITHOUT THE WRITTEN PERMISSION OF LINKTECH LLC IS STRICTLY PROHIBITED.</small>
<small>COMMENTS:</small>				PART NO: 10ACV-SB2-M3NS <small>DESCRIPTION:</small> LinkTech 10AC Series Inline Coupling, Valved, 3M HB, No Sleeve
SIZE	DWG. NO.	REV		
C	10AC100059	B		
SCALE: NTS	WEIGHT:			SHEET 1 OF 1